



Adjustable Steps

Assembly Manual





CAUTION - PUT SAFETY FIRST

1. Before attempting to install or operate this lift, study and fully understand the proper operating procedures and safety precautions outlined in this owner's manual.
2. Never exceed the recommended weight capacity of your lift. The lifted weight will include hull, engine, fuel, battery, and added accessories or gear. Weigh your fully loaded boat at a certified scale to be absolutely sure of the total weight.
3. Do not allow anyone on, in, or under the lift while operating.
4. Non-compliance with the procedures and precautions outlined in this manual will invalidate the warranty and may result in personal injury or death.
5. If you have any questions about assembly, installation, operation or suitability of this product, contact an authorized dealer or Feighner Boat Lifts & Docks directly at 1-800-BOATLIFT.



Hardware List

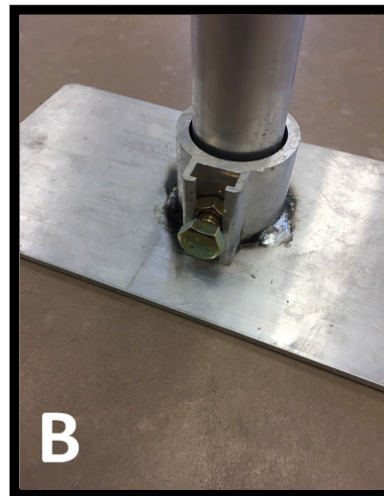
- (2) 2 ½ ft. Pipes
- (2) Mud Pads
- (2) Rubber Caps
- (4) ½ in. x 1 in. Bolt
- (4) ½ in. Jam Nut

NOTE: When assembling, keep all nuts and bolts loose at first. Tighten once all parts have been put in place.



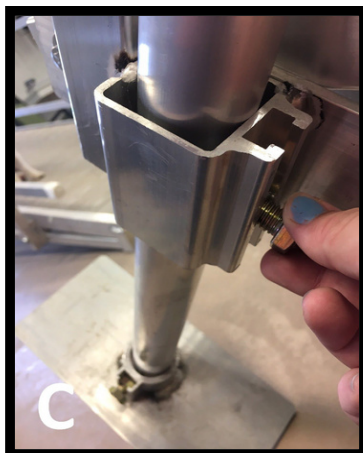
Step 1

You will receive the steps in a flattened position (pictured in figure A.) Slide (1) 2 ½ ft. pipe into (1) mud pad. Secure the two together using (1) ½ in. x 1 in. bolt and (1) ½ in. nut (pictured in figure B.)



Step 2

Slide the assembled pipe into the front square bracket on the steps. Secure the two together using (1) ½ in. x 1 in. bolt and (1) ½ in. jam nut (pictured in figure C.) Repeat for second assembled pipe. Extend the pipe a few inches below the bottom step; it will be modified later (pictured in figure D.)





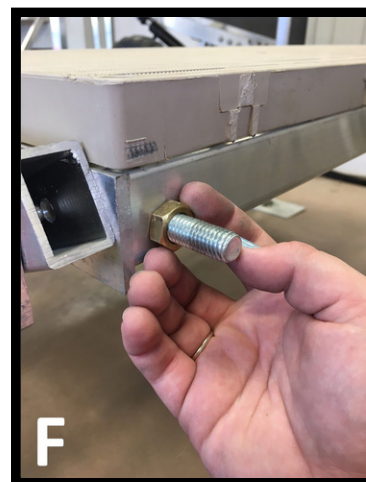
Step 3

To attach steps to a rolling dock, line steps up with the pre-drilled 46 in. bolt pattern (see figure E.) For a sectional dock, you will need to pre-drill the dock to accept the stairs. Holes should be drilled 46 in. apart.



Step 4

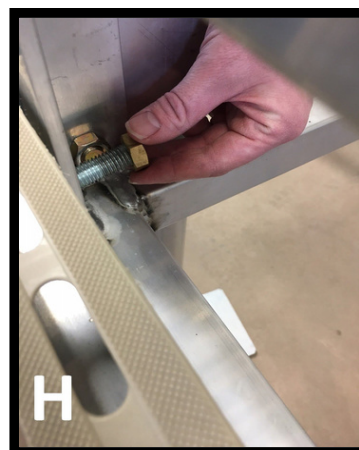
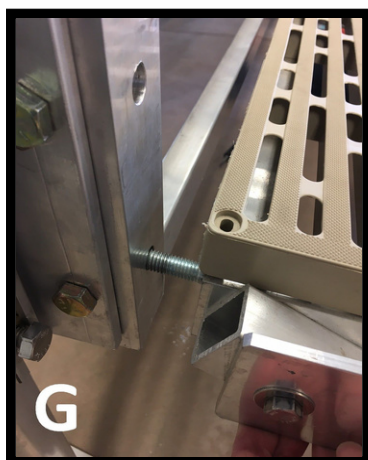
Unthread the ½ in. jam nut on the pre-set mounting bolt on the back of the steps (pictured in figure F.) Repeat for second mounting bolt.



Step 5

Locate a second person to help with the rest of the installation.

Line the mounting hardware with the lower hole in the 46 in. bolt pattern from Step 3 (pictured in figure G) or the holes drilled into the sectional dock. Re-screw the ½ in. jam nut from Step 4 on the back side of the bracket from Step 3 on the dock (pictured in figure H.)

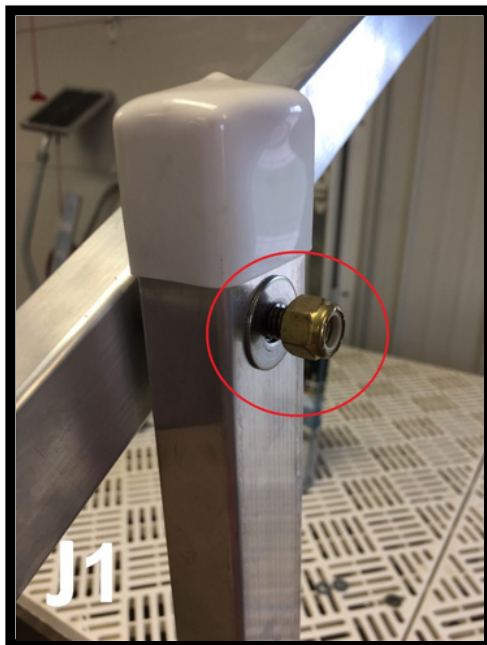




Step 6

The Feighner Adjustable Steps are designed to create a tread rise of a minimum of 6 in. to a maximum of 10 in. The standard household step is approximately 8 in (pictured in figure I) and is the recommended height.

To alter the tread rise, first loosen all the tread mounting hardware (pictured in figure J1 and J2.) There are (2) on the handrail and (4) per step. Continue to step 7.





Step 7

Adjust and level the steps to the height and tread rise that you prefer. Feighner Boat Lifts & Docks suggests about 8 in. (pictured in figure K.)

Note: It helps to push on the back of the step and pull up the front. If all the tread mounting hardware from Step 6 are too tight, the steps will be extremely difficult to level. You may need to re-adjust the height of the legs from Step 2.



Once you have your preferred tread rise, tighten the tread mounting hardware from Step 6.

Step 8

Using a wrench, go through all the previous steps to ensure that all hardware is tightened.